



WATTS CURRENT

Raccoon Valley Electric Cooperative
Reliable. Affordable. Responsible



October 2020

Annual Meeting Highlights

The Annual Meeting of Raccoon Valley Electric Cooperative (RVEC) was held September 9th. The in-person meeting was canceled due to the COVID-19 pandemic. RVEC member-owners received a \$10 electric bill credit if they returned their ballot by September 8th.

Attorney Amanda James gave the election results. Directors elected for a three-year term include: District 4 – David Onken of Glidden, incumbent; District 7 – Karen Werner of Schaller, incumbent.

The Board of Directors held an organizational meeting following the Annual Meeting. The following officers were elected: David Onken, President; Jeff Cranston, Vice-President; Mark Ludwig, Secretary-Treasurer; and Karen Werner, Assistant Secretary-Treasurer.



*David Onken and Karen Werner
were re-elected for three-year terms.*

RVEC Wants Your Help

In the coming weeks, RVEC will conduct a member survey. The survey will be sent to each residential member via e-mail and/or regular mail.

As a member-owner of RVEC, you have a voice in our organization. The information you provide by completing this survey will help us better communicate with you. The survey also assists RVEC and our power supplier with long-range electrical system planning.

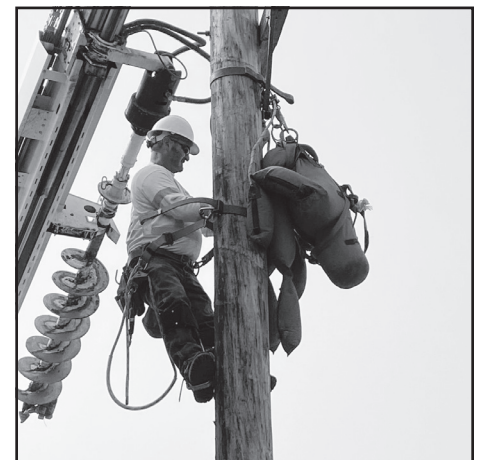
Neither RVEC or the survey vendor, Inside Information, will ask for credit card information or sell or share your private information. They will provide us with the survey results, and we will evaluate the information that is gathered to help improve our service and communication to you.

Each RVEC member-owner who completes the survey will be put into a drawing to receive a \$200 electric credit. Your response is an important component as we plan for the future. Thank you in advance for taking the time to complete a survey.

Pole Top Rescue Training

Emergency situations are part of the on-going safety training practiced by RVEC line crew. Once a month employees hold a safety training and educational meeting at the office.

The line crew practiced rescue operations during the September 17th Safety Meeting. Basket rescue and pole-top rescue involves having a victim lowered from the pole/basket by a rope. If needed, CPR would then be administered after the victim is on the ground. 12.13.04



Terry Vauble, Line Foreman, practices rescuing a human size dummy.

— CEO Comments —



Jim Gossett

October CEO comments typically reflect on the Annual Meeting and how nice it was to see everyone, provide an update on the performance of the cooperative, elect directors and honor employees. This year was quite different. RVEC by-laws allow for your mail-in ballots to count as your attendance for the purpose of a quorum at the Annual Meeting. While this method is not what any of us wanted, it was necessary this year due to the pandemic. Nearly 700 votes were cast by mail this year, more than triple the usual amount. Those who returned their mail in ballot by September 8th will receive a \$10 credit on the electric bill they receive in October.

RVEC is required to meet certain legal obligations according to our Articles of Incorporation and By-Laws. Our attorney supervised the counting of ballots by nominating committee and certified the election. Board elections were not contested this year, despite the best efforts of a solid nominating committee. Directors David Onken and Karen Werner were re-elected to three-year terms and continue to serve you well.

The 2019 Annual Report was included in the Annual Meeting packet that included your ballot, satisfying the reports typically provided at the Annual Meeting. Certain agenda items such as approval of last years meeting minutes, will be approved at the Annual Meeting next year.

While the format of the Annual Meeting was quite different this year, the reason we exist and the way we serve the member-owner is not. We follow the seven cooperative principles putting you, the member-owner, first in all we do. It is an honor to safely provide your home, farm and business with reliable, affordable and responsible electric service.

Don't Sacrifice Safety for Speed During Harvest

For many farmers, the harvest season is a flurry of activity with long hours and little rest. The pressure to harvest as much as possible — in combination with fatigue and looming deadlines — can result in too little attention being paid to potential hazards. Safe practices should never be compromised for the sake of speed. Doing so could potentially end in tragedy.

Farmers and agricultural workers have dangerous occupations. One of the causes of injury and death in the agricultural industry is electrocution. Of those injuries, overhead power lines are the most common cause of electrocution.

If you are a farm operator or worker, be aware of the location of power lines and keep the following safety guidelines in mind during the harvest season: 14.36.01

- Always use a spotter when operating large machinery near lines.
- Use care when raising augers or the bed of grain trucks around power lines.
- Keep equipment at least 10 feet from lines — at all times, in all directions.
- Inspect the height of the farm equipment to determine clearance.
- Always remember to lower extensions to the lowest setting when moving loads.
- Never attempt to move a power line out of the way or raise it for clearance.
- If a power line is sagging or low, call RVEC immediately.
- If your equipment does hit a power line do not leave the cab. Immediately call 911, warn others to stay away, and wait for the utility crew to cut the power.

The only reason to exit equipment that has come into contact with overhead lines is if the equipment is on fire, which is very rare. However, if this is the case, jump off the equipment with your feet together and without touching the ground and vehicle at the same time. Then, still keeping your feet together, hop to safety as you leave the area.

To help ensure a safe harvest, stay alert for power lines, exercise caution, and always put safety first.



THE 2020-2021 LOW-INCOME HOME ENERGY ASSISTANCE PROGRAM**LIHEAP INFORMATION**

The Low-Income Home Energy Assistance Program (LIHEAP) is designed to assist low-income families meet the cost of home heating. Applications are accepted on a first come/first served basis from November 1, 2020 (October 1 for elderly/disabled) through April 30, 2021, Monday through Friday, or as posted at the local office.

ELIGIBILITY

A household may qualify for assistance in this program if the household's income falls within the income range listed below. This program is not designed to pay a household's total energy costs, but to provide assistance in the payment of residential heating costs for eligible households. 34.27.01

At the time you apply, providing you have brought all necessary documentation with you (proof of income for the last 13 weeks and a copy of your heating and electric bills), you will be told whether you are eligible and if so, for what amount you might qualify. This initial determination is subject to review and totally dependent on the availability of federal funds. In most cases, benefits will be in the form of a credit applied to your heating bill by your utility company. Households who reside in subsidized housing that are individually metered and responsible for paying their primary heating costs are eligible. Subsidized households that are master metered are usually not eligible to receive assistance benefits.

Residents of any licensed medical facility (hospital, skilled nursing facility or intermediate care facility) publicly operated community residence or emergency shelter is ineligible unless they are paying a vendor directly for their primary heating source.

HOW TO APPLY

You may apply at your local community action agency from November 1, 2020 through April 30, 2021. Disabled and elderly lowans may apply beginning October 1, 2020. Applications are accepted on a first come/first served basis.

Please furnish your Social Security number, a copy of your most recent electric bill and proof of your households' gross income from all sources. If you receive interest or dividend income, alimony or child support, it will also need to be verified.

PROOF OF INCOME:

Attach documents that offer proof of total household gross income from all sources. HACAP or T.R.A.I.N. offices must have complete proof of income to process your application.

WAGE EARNERS:

Please bring copies of your check stubs for the three-month period preceding the date of application or a copy of your federal income tax return.

FIXED INCOME:

This income may include: Social Security Benefits, Supplemental Security Income, Aid to Families with Dependent Children or Family Investment Program, Veterans Assistance, Unemployment Insurance and pensions. Please bring a copy of your most recent check.

SELF-EMPLOYED/FARMERS:

Please bring a copy of your most recent federal income tax return. If you received interest or dividend income, alimony or child support, it will also need to be verified.

TANF (FIP) AND SSI RECIPIENTS:

Please bring in a copy of your Medicaid card

IF YOU ARE NOT SURE WHERE TO APPLY, WRITE:

LIHEAP, Iowa Department of Human Rights
Capitol Complex
Des Moines, IA 50319

INCOME MAXIMUMS

<u>Household Size</u>	<u>Annual Gross Income</u>
1	\$22,330
2	\$30,170
3	\$38,010
4	\$45,850
5	\$53,690

For family units with more than five members, add \$7,840 for each additional member.

Contact your local community action agency in your county for more information.

WATTS CURRENT

Published monthly by
Raccoon Valley Electric Cooperative

-- Directors --

David Onken, Pres. Glidden
Mark Adams..... Glidden
Jeff Cranston Odebolt
Steve Schable..... Carroll
Mark Ludwig Breda
Steve Seidl Coon Rapids
Karen Werner Schaller

-CEO-
Jim Gossett

-Office Address-
Headquarters
PO Box 486, 28725 Hwy 30
Glidden, IA. 51443
Phone: 712.659.3649
800.253.6211
Fax: 712.659.3716
Monday - Friday
7:00 a.m. to 4:00 p.m.

www.rvec.coop
e-mail: info@rvec.coop

Raccoon Valley Electric Cooperative
(RVEC) is an equal opportunity
provider and employer.



Follow us on facebook

Reliable.Affordable.Responsible



Touchstone Energy®
The power of human connections

Did you know October is Co-op Month?

- ✓ Cooperatives are owned and controlled by the people who buy their goods and use their services – their members – and any surplus revenues are returned to those member-owners. No other business form has this characteristic.
- ✓ Co-op members directly and democratically elect their board of directors from within the membership.
- ✓ Cooperatives are businesses that, by their very nature, are directly accountable to their member-owners. They are structured to ensure that the business serves only the best interests of its members.
- ✓ A cooperative returns any margins, after bills are paid and money is set aside for operations and improvements, to the co-op members in the form of patronage dividends.
- ✓ Co-op members benefit from better service, high quality products, cost savings on products and services and from their direct control of the co-op business.
- ✓ According to a recent survey by the National Cooperative Business Association, more than two-thirds of Americans surveyed believe that the democratic business structure of cooperatives is more trustworthy and ethical than other types of business. 29.12.06

**Source: National Cooperative Business Association.*



Look Up, Look Down, Look Out!

- For a safe harvest, be extra careful and stay alert for hazards.
- Keep an eye out for overhead power lines and electrical equipment on and under the ground.
- Be especially careful with tall equipment such as combines and grain augers.

Iowa's electric cooperatives want you to have a safe and productive harvest!

RVEC Puts Safety First!

Spot Your Number

Read Watts Current and watch for your location number. If you spot it, call RVEC by the 20th of the month and you will receive an electrical bill credit for \$25.00.