



WATTS CURRENT

Raccoon Valley Electric Cooperative
Reliable. Affordable. Responsible



January 2021

Board Retires 1995-96 Patronage

RVEC member-owners from 1995 and 1996 received patronage checks in early December. We encourage you to cash those as soon as possible. If you have any questions about your patronage account, call our office at 712.659.349 / 800.253.6211.

Power Restoration Plan

As the winter temperatures change, storm systems are produced and with them potentially damaging winds, sleet and snow. RVEC would like to guarantee you will have power 100% of the time, but that just isn't possible.

Immediately after a severe storm hits, RVEC linemen begin to assess the extent of the damage. The line superintendent designs a plan to restore power to the greatest number of members in the shortest amount of time. The severity of the outage and weather conditions always plays a role in the time it takes to restore power.

When a storm strikes, RVEC linemen are immediately dispatched to begin the restoration process. Repairs are made at the substations first, followed by major feeder lines and then individual service lines.

The last portion of the plan, dealing with individual outage situations, can take the greatest amount of time because of the great distance involved between houses. During that stage, linemen move house-to-house making repairs.

All during the power restoration efforts, the telephone calls are answered as they come in. During peak periods, all telephone lines coming into the office can be busy.

The diagram below shows how the restoration plan works. Repairs are made to lines from the substation first. This will restore power to House 3 and Factory 4. The main service line serving Houses 7 and Factory 6 will be repaired next. Finally, the individual service line to House 8 will be repaired.

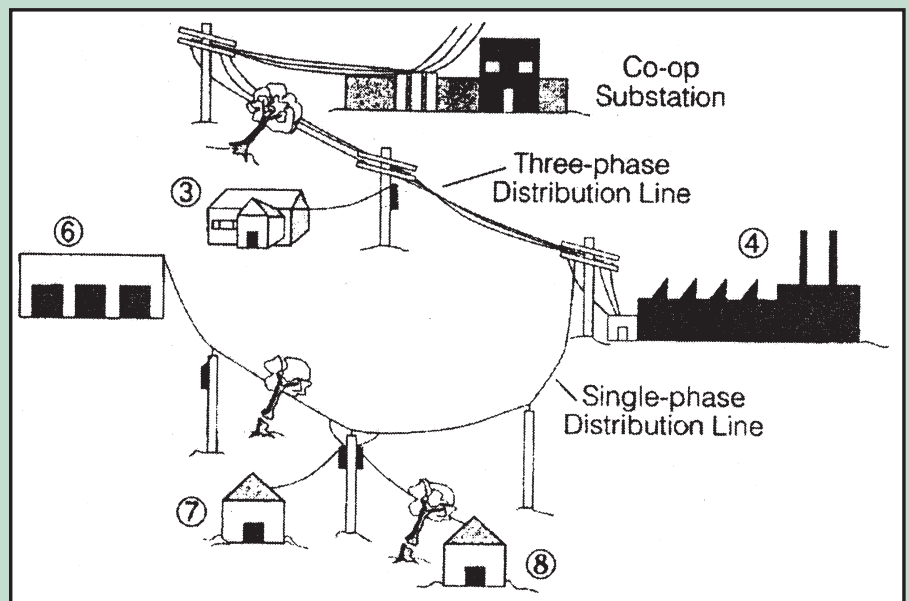
Line Patrol

Annual maintenance of our entire system has started. The linemen will be inspecting the lines for defective items, checking meters and looking for any safety hazards.

During the inspections we look for shot insulators, blown arrestors, loose guy wires, split or bad poles, poles have nothing stapled to them and that trees are not close to our electric lines. We are also looking for inadequate clearances from buildings and other driveways. 15.32.02

We have maintenance programs to upgrade lines and ensure that you have the most reliable and safest system possible.

Anytime you have questions about the trucks in your neighborhood, give us a call.



— CEO Comments —



Jim Gossett

As we turn the calendar and our attention to the new year, it is an exciting time for RVEC and our service to you in 2021. Last month, your Board of Directors approved the 2021 budget (with no rate increase!) and the annual construction work plan. This plan is important to you because it means we will continue to provide you with reliable power in 2021 and for years to come. 06.27.04

Planning an electric distribution system takes thought, foresight, and financial discipline. Build too much, and rates go up. Build too little, and reliability suffers. Like the Three Little Bears, we must get construction planning – and the execution of the plan – “just right”. Planning is key to our success in achieving our goal to safely providing you with reliable, affordable and responsible power.

Much goes into the construction work plan. With the help of our engineering consultants, we examine outage data, changes in the distribution system, how the load is balanced, line inspection records, and much more. Needs of the system are weighed against the cost to construct and maintain a reliable system so your power stays on.

In the winter months before construction can begin in the Spring, crews are maintaining equipment, taking inventory of material, and planning the purchases for the coming year. They will conduct annual line inspection, and tree trimming to reduce outages and restoration time. This is all in preparation for a construction season in 2021 that will certainly be affected by storm restoration, new service installation, and other necessary work.

It takes a lot of skill and effort to get it “just right”. Thankfully, with a Board that demands reliability and stability, and experienced employees to implement a sound plan, you can be assured we are doing everything we can to affordably maintain the system you rely upon.

Over the winter, our office in Glidden will be getting a much-needed facelift that will address safety, electrical, weatherization and technology issues. All this will be done to better serve you, the member-owner. We are looking forward to completion and re-opening the office! If you have any questions about this or any of our plans for 2021, please do not hesitate to contact us

What To Do If the Lights Go Out!

Winter weather can be harsh and unpredictable. RVEC wants you to be prepared in case severe weather causes a power outage. Here are a few tips for when winter weather hits:

- If your power goes out, see if your neighbors are also without power. If they have power, check your breakers.
- Turn off all lights in your home, but keep one light on to let you know when the power is restored.
- Unplug appliances, TVs, computers and all electronic equipment to prevent damage when the electricity is restored. If there are too many appliances drawing electricity when the power is first restored, the system could overload, causing the power to go out again.
- Have batteries handy for flashlights and a radio. Make sure these items are in a convenient location so you can find them in the dark.
- Remember to stay away from downed lines or tree limbs on power lines. Most downed lines are still “live” and can electrocute you if you touch them. Report these dangerous situations to RVEC.
- If you don't have an alternative heat source, put on heavy clothing before you get cold.
- Pull the drapes to save heat. Don't open windows or doors unnecessarily. You want to keep your heat in the house.
- Try to be patient while your power is being restored. RVEC will have your lights on again as soon as possible.

The most important thing to remember is to call RVEC. Please have your location number ready when you call in. We want to get your power turned on as quickly and safely as possible.

Scholarships Offered

Administered by Northwest Iowa Community College

Corn Belt Power Cooperative, power supplier to Raccoon Valley Electric Cooperative (RVEC), is partnering with Northwest Iowa Community College, Sheldon, to offer scholarship opportunities. As a Touchstone Energy® Cooperative, Corn Belt Power is committed to the communities it serves and to maintaining a skilled and educated workforce to serve its members well into the future. 34.28.01

Applicants must be enrolled in one of the following technical programs at Northwest Iowa Community College: Electrical Technology, Powerline, Powerline Technology or Substation Technician.

Four separate \$500 scholarships will be awarded annually to individuals who have met the eligibility requirements. Recipients may be either first or second year students, but are eligible for only one scholarship. Each scholarship will be split equally between the first two semesters of enrollment after receiving the scholarship. Scholarship proceeds may be used for tuition, fees and books.

To be considered a candidate for the Corn Belt Power Cooperative Scholarship, applicants must meet the following criteria:

1. Reside in a county served by a member cooperative of Corn Belt Power Cooperative.
2. Achieve a high school grade point average of 2.5 on a 4.0 scale.
3. Accepted as a full time student in one of the identified programs at Northwest Iowa Community College.
4. File scholarship application with the Northwest Iowa Community College Foundation by March 1.
5. Maintain 2.5 minimum grade point average; eligibility shall be reviewed each semester.

All applicants are required to submit a letter of reference from a high school instructor, guidance counselor, current employer or manager of a member electric cooperative with their applications. This reference should address the applicant's potential for success in the program chosen for enrollment. The primary criteria for the award will be the candidate's potential for success and grade point average.

For an application form or more information, contact the Northwest Iowa Community College Foundation, 603 West Park Street, Sheldon, IA 51201-1046, (800) 352-4907 ext. 246.

Administered by Iowa Lakes Community College

Committed to the communities it serves and to the production of renewable energy, Corn Belt Power Cooperative, power supplier to Raccoon Valley Electric Cooperative (RVEC), partners with Iowa Lakes Community College to offer a scholarship opportunity to students who study wind energy and turbine technology. Corn Belt Power is interested in maintaining a skilled and educated workforce that can install, maintain and service modern wind turbines.

Applicants must be enrolled in the Wind Energy and Turbine Technology program at Iowa Lakes Community College.

One \$500 scholarship will be awarded annually to an individual who has met the requirements set forth. Recipients may be either first or second year students, but are eligible for only one scholarship. Each scholarship will be split equally between the first two semesters of enrollment after receiving the scholarship. Scholarship proceeds will be used for tuition, fees and books.

To be considered a candidate for the Corn Belt Power Cooperative Scholarship, applicants must meet the following criteria:

1. Achieve a high school grade point average of 2.5 on a 4.0 scale.
2. Accepted as a full time student in the identified program at Iowa Lakes Community College.
3. Must be an Iowa resident.
4. File scholarship application with Iowa Lakes Community College by April 1.
5. Maintain 2.5 minimum grade point average; eligibility shall be reviewed each semester.

The primary criteria for the award will be the candidate's potential for success and grade point average.

For more information, contact Iowa Lakes Community College, 800-242-5106, ext. 4491.

WATTS CURRENT

Published monthly by
Raccoon Valley Electric Cooperative

-- Directors --

David Onken, Pres. Glidden
Mark Adams..... Glidden
Jeff Cranston Odebolt
Steve Schable..... Carroll
Mark Ludwig Breda
Steve Seidl Coon Rapids
Karen Werner Schaller

-CEO-

Jim Gossett

-Office Address-
Headquarters

PO Box 486, 28725 Hwy 30
Glidden, IA. 51443
Phone: 712.659.3649
800.253.6211
Fax: 712.659.3716
Monday - Friday
7:00 a.m. to 4:00 p.m.

www.rvec.coop
e-mail: info@rvec.coop

Raccoon Valley Electric Cooperative
(RVEC) is an equal opportunity
provider and employer.



Follow us on facebook

Reliable.Affordable.Responsible



Touchstone Energy®
The power of human connections

7 Ways to Lower Energy Bills — for FREE

1. Clean your clothes dryer's lint trap every time you load the machine. A lint-free trap allows for better air circulation, which could mean your clothes will dry quicker.
2. When it's sunny outside, throw open the curtains, even in the winter. Let the sun help warm your room and add enough light that you won't need lamps until sundown. On cloudy days, keep the windows covered, and more cold air will stay outside.
3. Wash clothes in cold water; you'll not only save energy, but you'll save water, too. And turn off the "heated dry" function on your dishwasher. Let the dishes air-dry instead.
4. If your refrigerator sits near a window or door, move it to another spot, if there's room. When sunrays and heat from the outdoors touch the fridge, it has to work harder — and use more electricity — to keep your food cold.
5. Unplug appliances — small ones like phone chargers and larger ones like computers and TVs — when you're not using them. Electronic devices use a little bit of electricity as long as they are plugged in — even when they are turned off. If you can't or don't want to turn your appliances off, switch them to "sleep" mode so they will draw less energy while nobody's using them.
6. Remove window air conditioners once the weather cools off. They're installed in open windows, after all, so they always invite drafts into the house. Store them away until summer.
7. Get rid of the refrigerator in your garage. Chances are, it's an old one that you moved there after you got an energy-efficient new model full of bells and whistles for your kitchen. That old energy hog would cost you plenty if it were in a room that you heat and cool. But in an uninsulated garage, it has to huff and puff to keep its contents cool when it's hot outside — and it's probably not even halfway full. 40.07.03



Spot Your Number

Read Watts Current and watch for your location number. If you spot it, call RVEC by the 20th of the month and you will receive an electrical bill credit for \$25.00.