



# WATTS CURRENT

Raccoon Valley Electric Cooperative  
*Reliable. Affordable. Responsible*



December 2016

## Basin Scholarship

Dependents of members of Raccoon Valley Electric Cooperative (RVEC) are eligible to apply for a \$1,000 scholarship to be provided by Basin Electric Power and Corn Belt Power, power suppliers of RVEC.

The scholarship program is designed to encourage and recognize the achievements of a student living on electric cooperative lines. The scholarship must be used for educational costs and the student must enter college in the fall of the school year for which the scholarship is given. The applicant must be a student who is enrolled or planning to enroll in a full-time graduate or undergraduate course of study at an accredited, two-year or four-year college, university or vocational/technical school. 23.26.04

This scholarship is awarded without regard to other awards, loans or financial assistance the applicant may have obtained. Award of the scholarship is based on the following criteria: SAT/ACT scores, grade-point average, work experience, participation in school and community activities, a statement by the student explaining his/her educational and career goals and a written recommendation by a third party.

Applicants may get an application form from RVEC. Completed application forms are due back to RVEC by **February 6, 2017**. For more information, contact Jill Hannasch at 712.659.3649 or 800.253.6211 or e-mail [jillh@rvec.coop](mailto:jillh@rvec.coop).

## 2016 Employee Service Award

RVEC recognizes employees celebrating years-of-service milestones. Thank you to our dedicated employees that are committed to serving our member-owners.



*Ryan Galloway,  
First Class Linemen,  
10 years of service*

## Give Space Heaters Space

Space heaters can work wonders on the coldest winter days to warm rooms your central heating system can't quite reach. But while manufacturers have worked to build more safety features into this alternative heating source, users still should take precautions to ensure these cozy heaters don't become fire hazards.

Space heaters are designed as a supplemental source of heat, not as the main source. So you shouldn't use them constantly, especially in rooms that you don't use

much. Check your space heaters for an Underwriters Laboratories seal and follow these guidelines for safely using them:

- Keep space heaters at least three feet away from drapes and furniture that could catch fire.
- Don't use extension cords with space heaters unless absolutely necessary.
- Inspect the heater's cord periodically for frayed wire or damaged insulation. Don't use a space heater with a damaged cord.
- Check periodically for a secure plug/outlet fit. If the plug gets hot, the outlet may need to be replaced by a qualified electrician. This could be the sign of a home wiring issue. 06.18.04
- Place your heater on a flat, level surface. Don't place heaters on furniture, as they may fall and break or even start a fire.
- Unless the heater is designed for use outdoors or in bathrooms, don't use it in wet areas.



**— CEO Comments —**

I wanted to follow-up with you regarding the rate increase letter you were mailed on October 31st. When you receive your January bill (December usage) the new rates will be reflected. Listed below is the increase by customer class.

It is important to understand that the cost of running the co-op is the basis for determining electricity prices, which is why the directors, staff and I pay close attention to costs because it directly impacts our electricity bills as well. At RVEC, spending decisions are made and reviewed by your board of directors.  
21.28.01

Corn Belt

Customer Class	Current Monthly Rate	Increase	New Monthly Rate	Percentage Increase
Single-phase	<ul style="list-style-type: none"> <li>Fixed charge of \$1.55/day</li> <li>Energy for first 1200 kWh \$0.1369/kWh</li> <li>Energy over 1200 kWh @ \$0.0940/kWh</li> </ul>	<ul style="list-style-type: none"> <li>Energy for first 1200 kWh increase of \$0.00709/kWh</li> <li>Energy over 1200 kWh increase of \$0.00709/kWh</li> </ul>	<ul style="list-style-type: none"> <li>Fixed charge of \$1.55/day</li> <li>Energy for first 1200 kWh \$0.1440/kWh</li> <li>Energy over 1200 kWh @ \$0.1011/kWh</li> </ul>	5.42%
Heating & Cooling Rate	<ul style="list-style-type: none"> <li>Fixed charge of \$0.10/day</li> <li>Energy May-September \$0.0940/kWh</li> <li>Energy October - April \$0.0510/kWh</li> </ul>	<ul style="list-style-type: none"> <li>Energy May-September \$0.0071/kWh</li> <li>Energy October-April \$0.0048/kWh</li> </ul>	<ul style="list-style-type: none"> <li>Fixed charge of \$0.10/day</li> <li>Energy May-September \$0.1011/kWh</li> <li>Energy October - April \$0.0558/kWh</li> </ul>	8.57%
Multi-phase	<ul style="list-style-type: none"> <li>Fixed charge of \$2.88/day</li> <li>Energy for first 1200 kWh \$0.1369/kWh</li> <li>Energy over 1200 kWh @ \$0.0940/kWh</li> </ul>	<ul style="list-style-type: none"> <li>Energy for first 1200 kWh increase of \$0.00709/kWh</li> <li>Energy over 1200 kWh increase of \$0.00709/kWh</li> </ul>	<ul style="list-style-type: none"> <li>Fixed charge of \$2.88/day</li> <li>Energy for first 1200 kWh \$0.1440/kWh</li> <li>Energy over 1200 kWh @ \$0.1011/kWh</li> </ul>	5.29%
Large Power	<ul style="list-style-type: none"> <li>Fixed charge of \$3.95/day</li> <li>Demand \$14.25/kW</li> <li>Energy \$0.0500/kWh</li> </ul>	<ul style="list-style-type: none"> <li>Demand \$1.07/kW</li> <li>Energy \$0.0025/kWh</li> </ul>	<ul style="list-style-type: none"> <li>Fixed charge of \$3.95/day</li> <li>Demand \$15.32/kW</li> <li>Energy \$0.0525/kWh</li> </ul>	5.80%

Power and Basin Electric, wholesale power suppliers to RVEC, increased their rates to RVEC and RVEC can't absorb this whole increase; therefore we have to pass part of that increase on to you our member-owners. RVEC strives to do everything within our control to manage the cost of providing you with reliable, affordable and responsible electricity. That being said, you can be assured that the decision to implement these rate increases were necessary.

RVEC directors and employees are looking out for your best interest and we will strive to exceed your expectations. We are doing everything possible to reduce cost, while still providing reliable, affordable and responsible service.

**Winter Is Here!**



Warm up those cold spots in your home with cove or baseboard heat. Individual thermostats allow that cold bathroom, basement corner or family room to have individual temperature control. Call RVEC today.

## Scholarships Offered

### Administered by Northwest Iowa Community College

Corn Belt Power Cooperative, power supplier to Raccoon Valley Electric Cooperative (RVEC), is partnering with Northwest Iowa Community College, Sheldon, to offer scholarship opportunities. As a Touchstone Energy® Cooperative, Corn Belt Power is committed to the communities it serves and to maintaining a skilled and educated workforce to serve its members well into the future. 08.34.01

**Applicants must be enrolled in one of the following technical programs at Northwest Iowa Community College: Electrical Technology, Powerline, Powerline Technology or Substation Technician.**

Four separate \$500 scholarships will be awarded annually to individuals who have met the eligibility requirements. Recipients may be either first or second year students, but are eligible for only one scholarship. Each scholarship will be split equally between the first two semesters of enrollment after receiving the scholarship. Scholarship proceeds may be used for tuition, fees and books.

To be considered a candidate for the Corn Belt Power Cooperative Scholarship, applicants must meet the following criteria:

1. Reside in a county served by a member cooperative of Corn Belt Power Cooperative.
2. Achieve a high school grade point average of 2.5 on a 4.0 scale.
3. Accepted as a full time student in one of the identified programs at Northwest Iowa Community College.
4. File scholarship application with the Northwest Iowa Community College Foundation by March 1.
5. Maintain 2.5 minimum grade point average; eligibility shall be reviewed each semester.

All applicants are required to submit a letter of reference from a high school instructor, guidance counselor, current employer or manager of a member electric cooperative with their applications. This reference should address the applicant's potential for success in the program chosen for enrollment. The primary criteria for the award will be the candidate's potential for success and grade point average.

For an application form or more information, contact Sheila Van Engen, foundation secretary, Northwest Iowa Community College Foundation, 603 West Park Street, Sheldon, IA 51201-1046, (800) 352-4907 ext. 246, svanengen@nwicc.edu.

### Administered by Iowa Lakes Community College

Committed to the communities it serves and to the production of renewable energy, Corn Belt Power Cooperative, power supplier to Raccoon Valley Electric Cooperative (RVEC), partners with Iowa Lakes Community College to offer a scholarship opportunity to students who study wind energy and turbine technology. Corn Belt Power is interested in maintaining a skilled and educated workforce that can install, maintain and service modern wind turbines.

**Applicants must be enrolled in the Wind Energy and Turbine Technology program at Iowa Lakes Community College.**

One \$500 scholarship will be awarded annually to an individual who has met the requirements set forth. Recipients may be either first or second year students, but are eligible for only one scholarship. Each scholarship will be split equally between the first two semesters of enrollment after receiving the scholarship. Scholarship proceeds will be used for tuition, fees and books.

To be considered a candidate for the Corn Belt Power Cooperative Scholarship, applicants must meet the following criteria:

1. Achieve a high school grade point average of 2.5 on a 4.0 scale.
2. Accepted as a full time student in the identified program at Iowa Lakes Community College.
3. Must be an Iowa resident.
4. File scholarship application with Iowa Lakes Community College by April 1. 34.32.05
5. Maintain 2.5 minimum grade point average; eligibility shall be reviewed each semester.

The primary criteria for the award will be the candidate's potential for success and grade point average.

For more information, contact Jolene Rogers, institutional advancement/foundations, Iowa Lakes Community College, 800-242-5106, ext. 4491 or jrogers@iowalakes.edu.

# WATTS CURRENT

Published monthly by  
Raccoon Valley Electric Cooperative

-- Directors --

David Onken, Pres. .... Glidden  
Jeff Cranston ..... Odebolt  
Dennis Kennebeck ..... Carroll  
Mark Ludwig ..... Breda  
Steve Seidl ..... Coon Rapids  
Mark Tigges ..... Glidden  
Karen Werner ..... Schaller

-CEO-

James E. Bagley

-Office Address-  
Headquarters

PO Box 486, 28725 Hwy 30  
Glidden, IA, 51443  
Phone: 712.659.3649  
800.253.6211  
Fax: 712.659.3716  
Monday - Friday  
7:00 a.m. to 4:30 p.m.

www.rvec.coop  
e-mail: info@rvec.coop

Raccoon Valley Electric Cooperative  
(RVEC) is an equal opportunity  
provider and employer.



Follow us on facebook

Reliable. Affordable. Responsible



Touchstone Energy®  
The power of human connections

## Power Restoration Plan

As the winter temperatures change, storm systems are produced and with them potentially damaging winds, sleet and snow. RVEC would like to guarantee you will have power 100% of the time, but that just isn't possible.

Immediately after a severe storm hits, RVEC linemen begin to assess the extent of the damage. The line superintendent designs a plan to restore power to the greatest number of members in the shortest amount of time. The severity of the outage and weather conditions always plays a role in the time it takes to restore power.

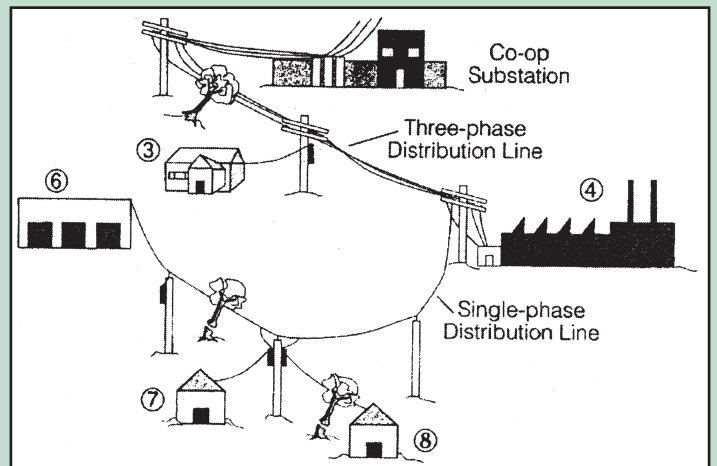
When a storm strikes, RVEC linemen are immediately dispatched to begin the restoration process. Repairs are made at the substations first, followed by major feeder lines and then individual service lines.

The last portion of the plan, dealing with individual outage situations, can take the greatest amount of time because of the great distance involved between houses. During that stage, linemen move house-to-house making repairs. 28.33.02

All during the power restoration efforts, the telephone calls are answered as they come in. During peak periods, all telephone lines coming into the office can be busy.

The diagram below shows how the restoration plan works. Repairs are made to lines from the substation first. This will restore power

to House 3 and Factory 4. The main service line serving Houses 7 and Factory 6 will be repaired next. Finally, the individual service line to House 8 will be repaired.



RVEC will be doing line inspection  
and checking our meters.

## Spot Your Number

Read Watts Current and watch for your location number. If you spot it, call RVEC by the 20th of the month and you will receive an electrical bill credit for \$10.00.